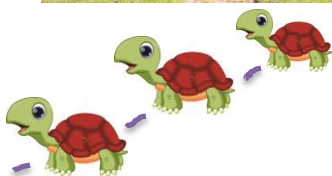
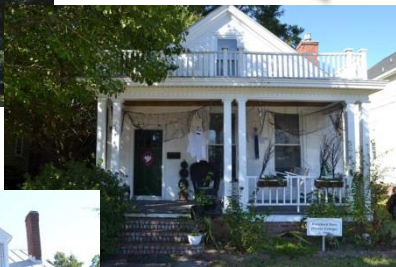
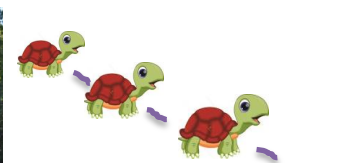


Turtle Walk #1

CHURCH & FRONT STREETS

HISTORIC HOMES

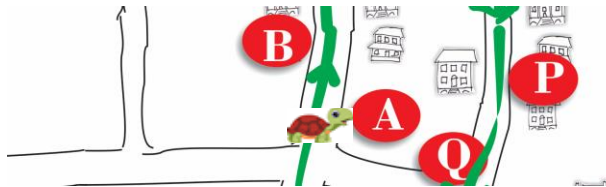


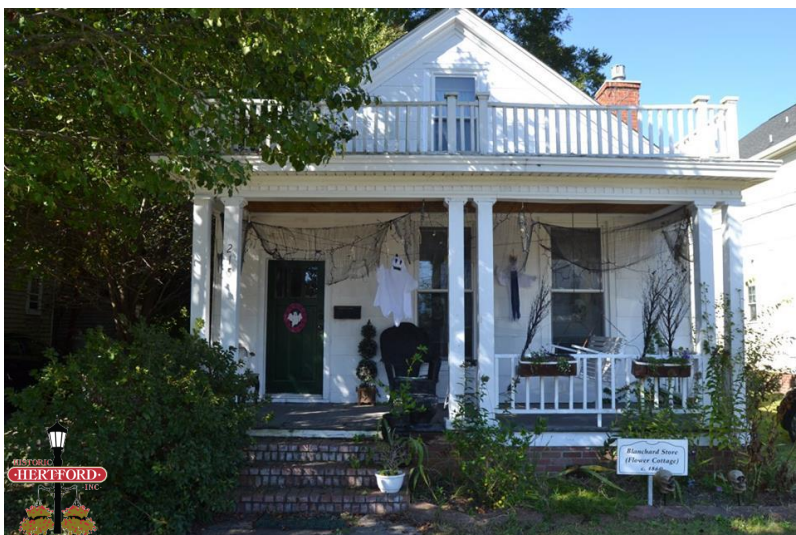




**Edward Wood House
208 N Church St
circa 1818**

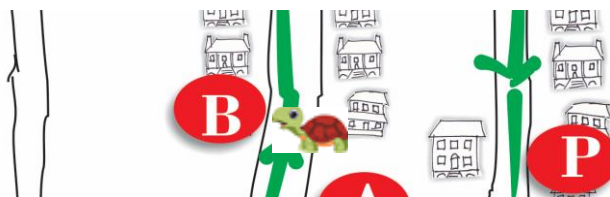
Built by Wood, the Clerk of the Superior Court, it is a Federal side-hall plan that was later updated in the Greek Revival Style. The 1828 tax valuation for this and 2 adjoining lots was \$1,100. Of note is the coastal appearance with a 2-story engaged porch. A pair of exterior paved double shoulder chimneys laid in Flemish bond are on the south side. Double sash windows contain 9/9 lights at the first floor & 9/6 on the second floor.





Flower Cottage
215 N Church St
circa 1860

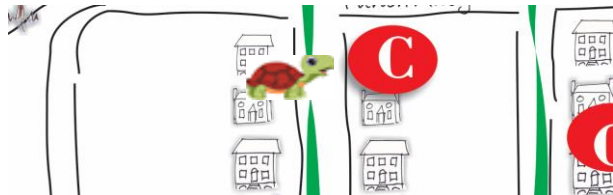
This house is believed to have first been used by the Blanchard Mercantile Co. in 1866 and as a storehouse for Col. Wilson Reed. It was named the Flower Cottage in the 1870's by Miss Pennie Norcum. She taught the young ladies in town handwork and painting in the house.





Dr James J. Shannonhouse House
220 N Church St
circa 1872

Built by Dr. Shannonhouse, this is an example of a late Greek Revival 1½ story coastal cottage with a center hall. The house has 4 capped interior end chimneys and gable dormers. A 3-bay facade is flanked by sidelights with transom capping the central entrance.





Dr Thomas S McMullan House
303 N Church St
circa 1905

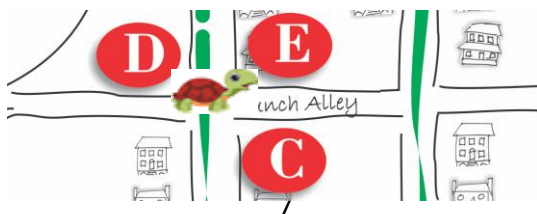
This house was built by Dr Thomas McMillen in 1905 and uses typical Queen Anne styling with Colonial Revival details. The wrap around porch with simple columns, balustrades and bracketed eaves were all popular features of the period. The hip roof has pedimented gables with Palladian ventilators. Dr McMullan was the county's Superintendent of Health from 1910 to 1916.





Creecy-Skinner Whedbee House
101 Punch Alley
circa 1775

Believed to be the oldest house in Hertford, it was built by Nathaniel Martin. A traditional Federal-style house, it has 2½ stories with a double-tier engaged porch and has maintained its original paired entrances. Double sash windows have 9/9 lights. Only one of the original three chimneys remains; this is laid in 1:5 common bond with tumble shoulders. The picket fence was a common sight in town. Visible features of a period later than 1775 indicate later modification. Noted occupants included the Rev. William E. Snowden, founder of the Hertford Episcopal Church; lawyer Thomas G. Skinner, the only U.S. Congressman elected from Perquimans; and lawyer legislator-raconteur, Charles Whedbee.





Penelope S. McMullan House
308 N Church St
circa 1900

The most outstanding Queen Anne-style dwelling in Hertford, this finely detailed house is attributed to Architect Hill C. Linthicum. Penelope S. McMullan acquired the property in 1898. Her husband, Sidney, was a principal in the Toms and McMullan Carriage Manufacturing Company and the McMullan Lumber Company. In 1907, the property was sold to William S. Blanchard, partner in Blanchard's General Mercantile Store. Since 1922, a series of owners included Annie H. Butler and J. Emmett Winslow. The Queen Anne massing of the large 2-story dwelling includes projecting gables, a wrap-around porch with porte-cochere, and a rear 2-story ell. Beautiful woodwork details that highlight the exterior are spindle bands, modillion blocks and a widow's walk. The porch is supported by pairs of unusual baseball-bat-shaped posts standing on brick pedestals. Elliptical stained glass windows are focal points on the facade. The double-door entrance opens into a small vestibule with a stair hall beyond. Interior chimneys serve each room, including the hall with an impressive masonry Romanesque-style mantel with niches.



**Mary E. Saunders Rental Houses
309, 311 and 313 N Church Street
circa 1890**

These represent Hertford's growing speculative housing market at the turn of the 20th century. Born in 1895, Mildred (Edwards) Whitley, aka "Mic", lived in #309. She was an artist and organist at the Episcopal Church. One of the three houses, this small double-pile single-story cottage still features its hip-roof porch ornamented by sawn work brackets and cornices. The exposed-face interior chimneys at the gable ends are distinctive. Two of the houses have been substantially renovated, but #309 is virtually unaltered.





Lewis H. Richardson House
310 N Church Street
circa 1851

As Lewis Richardson was a blacksmith, we are reminded that artisans tended to settle in town rather than in the countryside. A stylish Greek-Revival variation of the side-hall plan is illustrated in this handsome 2-story house. It is further dignified by its complementary front and rear double-tier engaged porches. This porch form is a characteristic feature of the Albemarle region, especially common during the first half of the 19th century. Other distinctive features are the virtually identical porch entrances highlighted by a simple Greek Revival corner-block surround and framed by sidelights and a transom. Typical of the period is the pair of interior chimneys. The house was later owned and/or occupied by James L. Skinner, Dr. William R. Riddick and Joseph F. Newby.

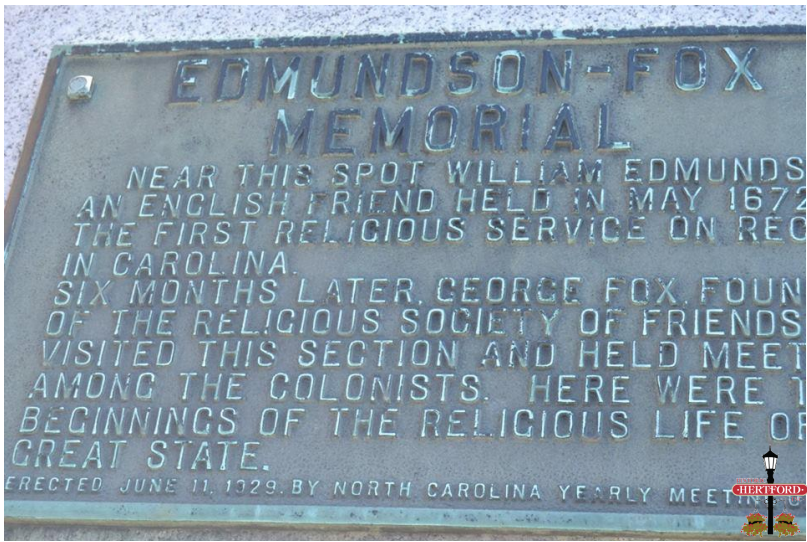




Thomas Nixon House
314 N Church St
C 1917

This imposing Neoclassical Revival house was built in 1917 by Thomas Nixon. The monumental portico support by paired Ionic columns grace the front façade. Wrap around single story porches with porte-cochere complete the look. The two story house features a large center hall. Thomas Nixon was a prominent businessman and civic leader.

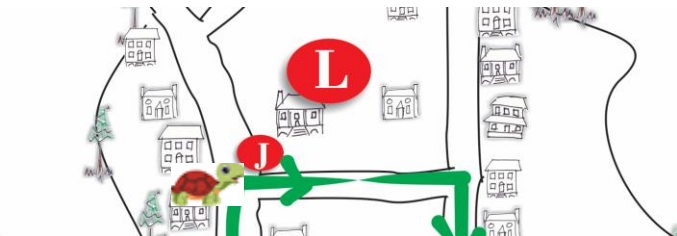




Edmundson-Fox Memorial

On the corner of Church & Newby St

Near this spot in May 1672, the first religious service on record in North Carolina was held. Six months later, George Fox, Founder of the Religious Society of Friends (Quakers), also visited this section and held meetings among the colonists. Here were the beginnings of the religious life in our state. The North Carolina Yearly Meeting of Friends dedicated this monument on June 11, 1929.





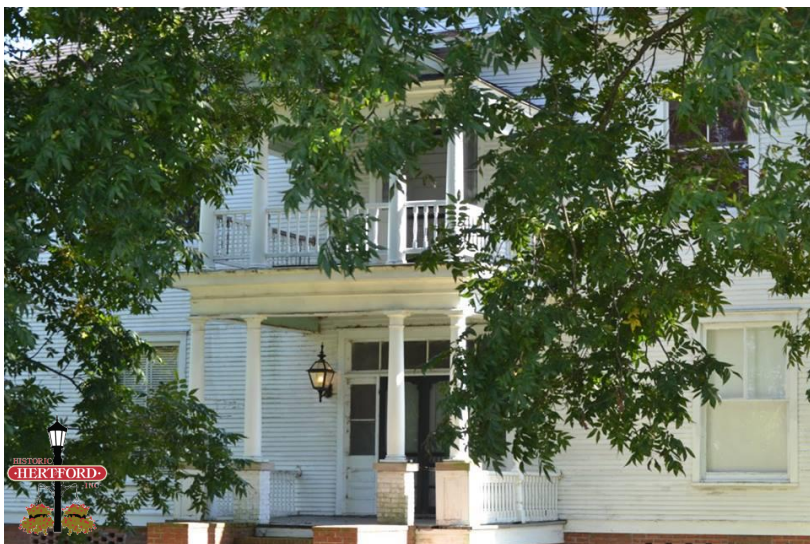
Hertford S-Bridge c1928

The current bridge was built in 1928. The original bridge, a float bridge, was constructed at Phelps Point in 1798 by John Clary & Francis Newby for 1,200 pounds and was purchased in 1838 by Perquimans County for \$5,786. It was a military target during the Civil War and was destroyed by Union forces in 1863. A ferry operated for 5 years until a new bridge could be completed in 1868. The new bridge was again a float bridge and it proved to be inconvenient and costly. A letter to the editor in 1892 commented, "We can justly claim the only float bridge in the world and we can also remark we are the only people in the world that want one."

Benny Goodman wrote "Carolina Moon" after seeing the moon rise from the bridge. It was a #1 hit in 1924.

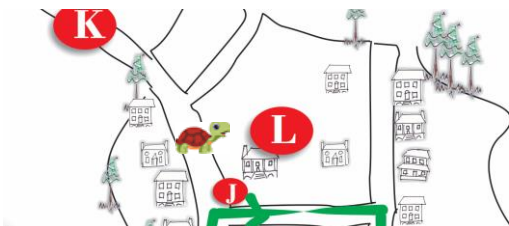
The current bridge is a curving cement bridge with a steel Warren-truss center pivot swing.

NC Department of Transportation has plans to replace the current bridge in the near future.



Patrick Small House
400 N Church St
circa 1905

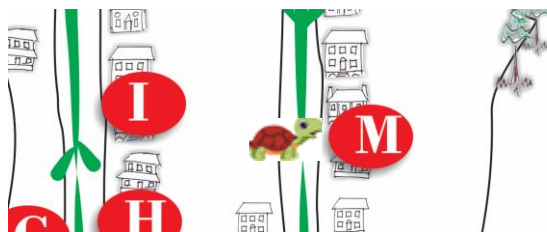
This large two story Colonial Revival house was built around 1915 by Patrick Small and features a double-pile center hall plan. Patrick Small was the owner of a local merchandise store and served as a county commissioner. He was also a partner in the Yeopim Lumber Company. The house was remodeled in 1945 and the front porch was significantly altered.





Simpson-Blanchard House
300 N Front St
circa 1856

The house was built by the Clerk of Superior Court and merchant, Thomas R. Simpson. The original 3-bay, 2-story dwelling is characterized by a double-tier engaged porch, a side-hall plan, interior end chimneys and late Federal-style details. At one time, in the rear, there stood a 1-story detached kitchen. The house had a long association with the Blanchard family, leading merchants of the town.





Elizabeth F. and Henry Stokes House
218 N Front St
circa 1874

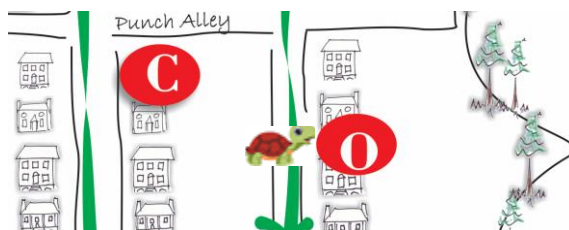
This house was a wood-frame house until 1978 when it was damaged by fire. It was built by Henry Clay Stokes, a carpenter and harness maker. Since that time many generations of the Stokes family have occupied the house. This 2-story center-hall plan house was originally L-shaped with a 2-tier porch. Brick was added after the fire when it was remodeled.





Thomas Jackson House
208 N Front St
circa 1872

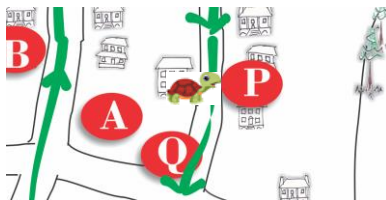
Probably built soon after Thomas Jackson bought the property in 1872. The 2 story Greek Revival as a 2 story rear ell and one story addition. The front façade features windows flanked by sidelights and the central entrance capped by a transom. The front porch was substantially remodeled in 1935.





Thomas Jackson Brinn House
206 N Front St
circa 1872

Built by Thomas Jackson, this house was sold 10 years later to William S. Blanchard. The 2-story frame dwelling has a 1-story rear addition. The main entrance is capped by a transom and the 3-bay facade is flanked by sidelights. A single-shoulder exterior chimney laid 1:5 common bond is located on either end of the main section. The hipped-form roof is interrupted by gables. This late use of the Greek Revival-style had already passed from general usage. Blanchard owned the house until 1913 when it was purchased by Eleanor W. Brinn.





Matthew H. White House
107 E Grubb St
circa 1893

This house is an example of the Queen Anne-style. White had perhaps the most varied business interests in Perquimans, including general merchandise, real estate, agriculture, grist and saw mills, an ice company, cotton oil processing, horse trading and racing. He also constructed rental houses in the town and made significant improvements to the public road that passed through one of his farms. In 2003, the owners began an extensive task to restore the home to its original splendor while bringing it up to date and suitable for today's family living. Rebuilding of the previously removed turret and porches, reclaiming the butler's pantry, and discovering covered fireplaces are a few of the projects undertaken.





Temperance Hall
116 N Front St
circa 1851

This structure is typical of mid -19th century buildings. Temperance organizations were active in Perquimans County during the 1840's and 1850's. Members were primarily Quakers and Methodists. The building was used by Hertford's Washington Temperance Society until 1856 when it was sold, converted into a side-hall residence and the double-tier engaged porch was added. The house is 2-story framed with pine and cypress timber and has a pair of interior end chimneys.





**Wood-McCallum-Winslow House,
110 N Front Street
circa 1825**

Built by Benjamin Wright, a tailor, this house is an early 19th century home with a 2-story double-pile hip roof with Federal-style entrance. Its most outstanding interior feature is a black & white checkerboard hand stenciled plastered floor. John Wood, a long-time Clerk of the Superior Court, purchased the property in 1823. In later years, the house was owned by Jesse P. Skinner and her husband, U.S. Congressman Thomas G. Skinner, and Clyde and Ellen McCallum. The house was purchased in 1963 by Emmett Winslow, former country sheriff and state legislator.





McMullan-Fleetwood House
100 N Front Street
circa 1881

Built by Dr. John H. McMullan, this 5-bay, 2-story Colonial Revival was remodeled by Judson J. Fleetwood, a lumber executive, after he purchased it in 1897. The house was moved in 1939 a short distance to the north to make room for the house at 106 North Front St.



**We hope you enjoyed the
Turtle Walk #1.
Try Turtle Walk #2.
Please return this copy to
The Perquimans County
Chamber of Commerce at
118 W Market St, Hertford.**

